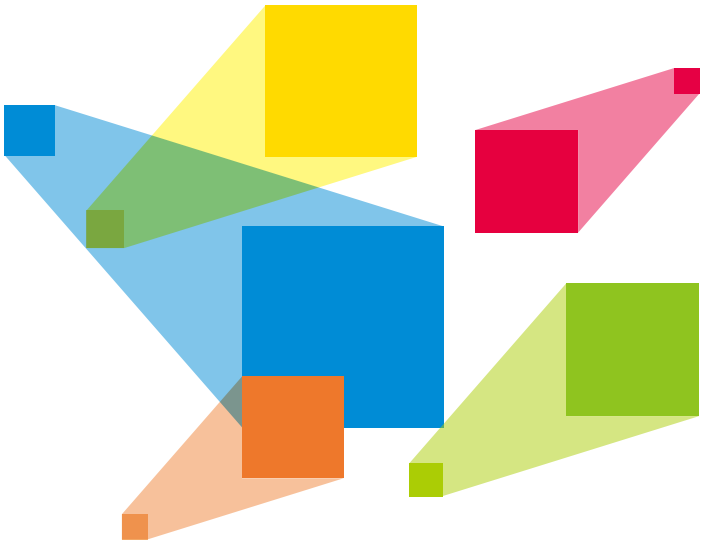




ET4000

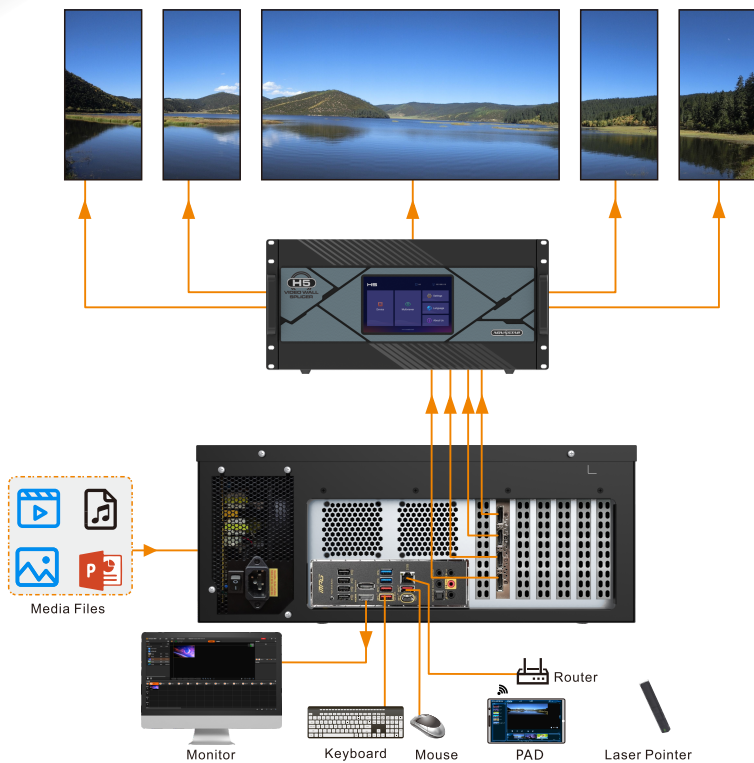
Media Server



Quick Start Guide

2

Applications




3

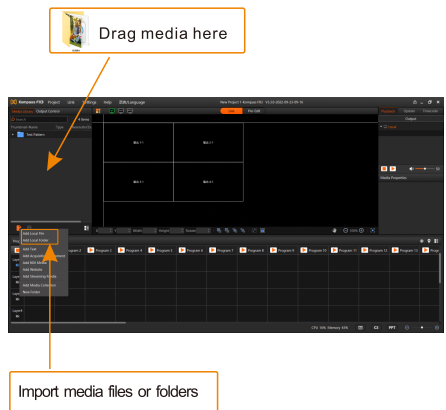
Software Operations

The ET4000 has a built-in media playback and control software named Kompass FX3, which allows you to perform a variety of operations, such as adding media files, configuring outputs, editing and playing programs.

3.1 Add Media Files

Kompass FX3 supports batch importing of media files and folders via either of the following ways.

- Simply drag a single or multiple media files or folders to **Media Library**.
- Click  at the bottom left corner of **Media Library**, and then select **Import File** or **Import Folder** to import the desired media files or folders.



3.2 Configure Outputs

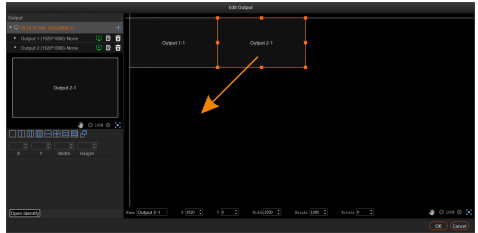
After startup, Kompass FX3 will detect and add the graphics card connectors automatically, and then bind those connectors with the outputs. All the connectors are displayed in the output list on the left.

Click  to open the **Edit Output** window where you perform the following operations:

- Arrange outputs: Arrange the output connector layout based on the screen structure.
- Bind and edit outputs: Add outputs and change the binding relations between the outputs and the physical connectors of the ET4000.


Arrange Outputs

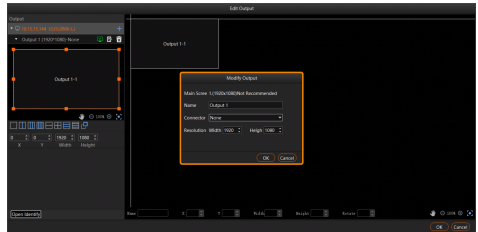
Simply click and drag the outputs on the right to change the output arrangement based on the screen structure.



Bind and Edit Outputs

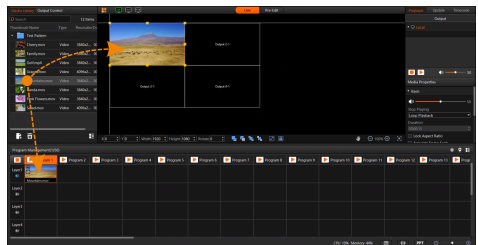
When the connector connection changes, you do not need to change the physical connection. Simply re-bind the connector with the output.

1. Click  in the output list area of the **Edit Output** window to edit the outputs.
2. Select the physical connector on the ET4000 that corresponds to the current output.
3. Click **OK** to complete the binding.




3.3 Edit Programs

1. Select the target media file in **Media Library** and drag it to the desired layer in a program or to the stage editing area.
2. Drag a layer in the stage editing area to quickly reposition the layer, and drag any of the eight dots on the layer edges to quickly resize the layer.

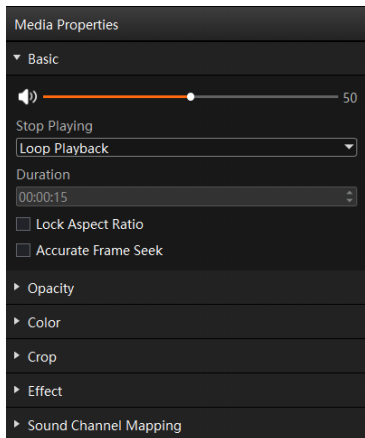


Notes

Kompass FX3 supports two kinds of editing modes:




- Live: All the layer, program and stage editing are displayed on the screen in real-time.
- Pre-edited: Complete all the editing in advance, and then click  at the top right to send them to the screen and play the programs from the beginning. The whole editing process will not affect the output.

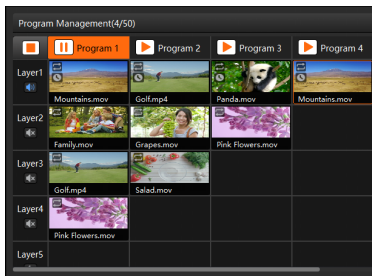
3. Set the layer playback properties in **Media Properties**.
4. Edit the layers in a program one by one to complete the program editing.



3.4 Play Programs

After you have completed the program editing, play the program as you like.

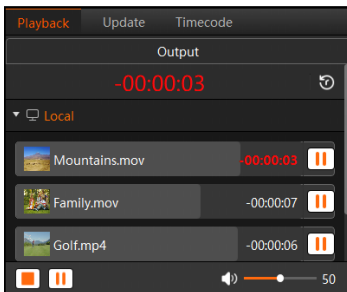
-  Play the program.
-  Pause the program playback.
-  Stop the playback of all programs.



Layer Playback Control

You can play a single layer or pause the layer playback in **Playback Progress**.

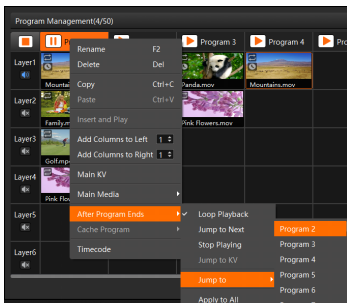
Click  next to a layer name to pause the playback.



Program Jumping

Right click a program to open the context menu and select **Stop Playing** where you can set the actions after the current program playback ends.

Main Media: Set which layer is used as the main media. The playback timing and program switching are all based on the main media.



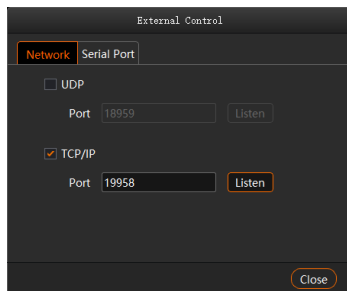
3.5 App Control

The ET4000 can be controlled via an App named Visual Centralized Control Platform (VCCP). Before you use the App to control the device, please enable the listening port for the external control first.

1. Go to **Settings > External Control** to open the external control settings window.
2. Select the **Network** tab and check the box in front of **TCP/IP**.
3. Enter the port number in the text box next to **Port**.

The value ranges from 1024 to 65535.

4. Click **Listen** to enable the listening for the external control.



Note

Before you use the Visual Centralized Control Platform (VCCP), please refer to the *Visual Centralized Control Platform User Manual* in advance for the operation details.