

# SSR-L29

Light Sensor

---

Specification V1.3



## Overview

SSR-L29 light sensor can be used to monitor the environment light, allowing for the automatic brightness adjustment of the LED display, achieving the best visual effect while energy saving.

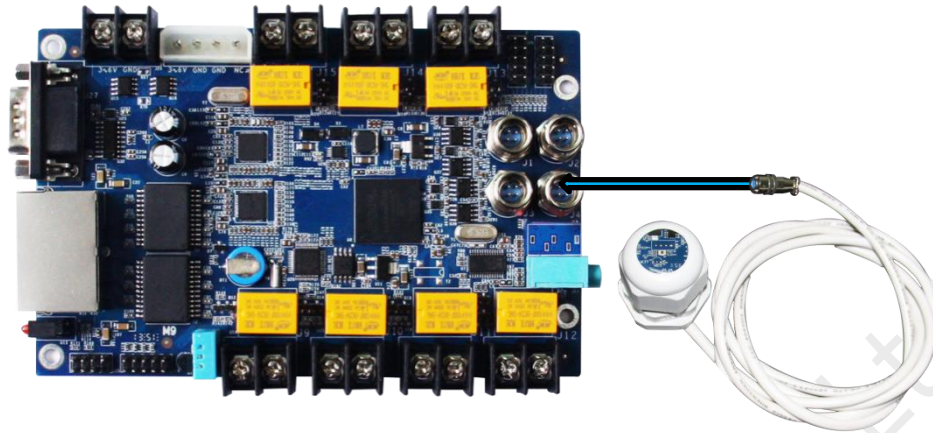
## Features

- Use with iM9 multi-function card (4 optional ports).
- Standard cable length: 5 meters, extendable.
- Waterproof, dustproof, and salt-resistant, ideal for outdoor use.
- No external power supply required.
- External size:  $\varnothing 45 \times 50$ .

## Specifications

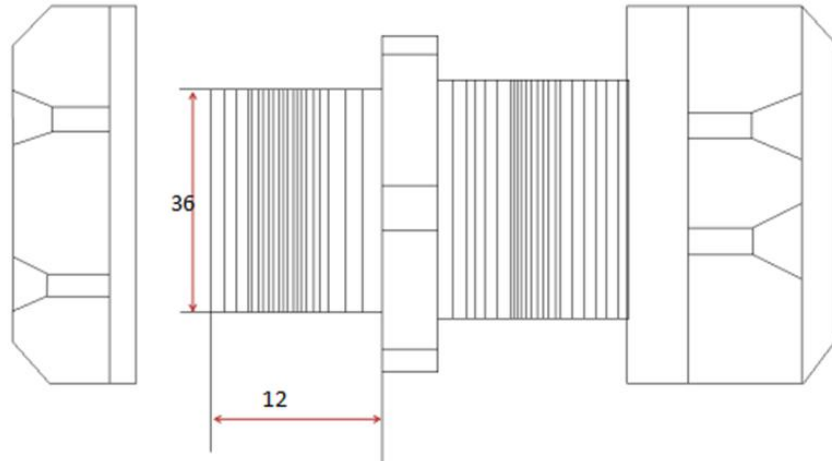
Rated voltage	5V
Operating temperature	-20°C—75°C
Operating humidity	0—99%
Measuring range	0—65535 lux

## Connection



## Dimensions

Unit: mm



## Statement

Copyright © 2023 Colorlight Cloud Tech Ltd. All rights reserved.

No part of this document may be copied, reproduced, transcribed, or translated without the prior written permission of Colorlight Cloud Tech Ltd., nor be used for any commercial or profit-making purposes in any form or by any means.

 The logo is a registered trademark of Colorlight Cloud Tech Ltd.

Without written permission of the company or the trademark owner, no unit or individual may use, copy, modify, distribute, or reproduce any part of the above and other Colorlight trademarks in any way or for any reason, nor bundle them with other products for sale.

Due to possible changes in product batches and production processes, the text and pictures in the document may be adjusted and revised to match accurate product information, specifications, and features. Colorlight may make improvements and changes to this document without prior notice. Please refer to the actual product.

Thank you for choosing Colorlight Cloud Tech Ltd product. If you have any questions or suggestions during use, please contact us through official channels. We will do our utmost to provide support and listen to your valuable suggestions. For more information and updates, please visit [www.colorlightinside.com](http://www.colorlightinside.com) or scan the QR code.

Service Phone

**4008 770 775**

**Colorlight Cloud Tech Ltd**

Official Website: [www.colorlightinside.com](http://www.colorlightinside.com)

Head Office Address: Room 37F-39F, Building 8, Zone A,

Shenzhen International Innovation Valley, Vanke Cloud City, Dashi Yilu,

Nanshan District, Shenzhen, China

